

---

*Comfort-Cire*®

**Century**®

---

**User Manual**

**7602-536**

Wired Controller



---

[www.marsdelivers.com](http://www.marsdelivers.com)

# PTAC Unit Wire Controller Manual

Figure Number: SA-PT01ENG-0  
Material Code: 802000190292

Please read this manual carefully before installation and install according to the instruction.

## I. Use-method

The control panel of wire controller is responsible for controlling the operation status of the system by the button and displaying the working status of the entire system by its LCD screen, and is responsible for communicating with the control board of the system.



Fig1 Appearance of Wire Controller

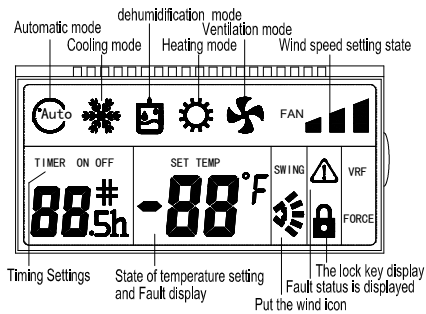


Fig2 LCD display content of Wire Controller

### Operation and Instruction:

#### "ON/OFF" Button:

Control the On/Off status of the system.

#### "MODE" Button:

When the air conditioning is powered on, every time you press mode button or the mode button of the hand-held remote controller, the mode will change in the following sequence. For cooling only unit: Cooling Mode→Ventilation→Cooling Mode. For heating and cooling unit: Cooling Mode→Ventilation→Heating Mode→Cooling Mode.

#### "TEMP+" and "TEMP-" Button ("▲", "▼") :

1) Press "▲" and "▼"Button, increase/decrease the setting temperature. Cooling, Ventilation and Heating mode Setting temperature range: 61°F ~ 88°F.

2) Press the "▲" and "▼" buttons simultaneously to lock buttons except ON/OFF button. At this time, It will display the locking icon in LCD. Deactivate buttons, pressing the "▲" and "▼" button simultaneously again.

#### "TIMER" Button

Set Timing On or Timing Off. The wire controller to set the time range as 1-24h. This function is only for new units produced after September, 2018.

1) Press the Timer button in the Off status to go into the Timing On for 1 hour, and then each press the Timer button will add 1 hour until it is timing on for 24h. At this time, if you press the Timer button again, it will deactivate Timing On.

2) Press the Timer button in the On status to go into the Timing Off for 1 hour, and then each press the Timer button will add 1 hour until it is timing off for 24h. At this time, if you press the Timer button again, it will deactivate Timing Off.

#### "FAN SPEED" Buttons, FAN HIGH, FAN LOW, FANAUTO:

1) The Fan Speed button is valid in the "Cooling mode", "Heating mode" and "Ventilation mode".

2) Press your desired Fan Speed button of the wire controller to choose High, Low or Auto fans speed in the Cooling mode, Heating mode or Ventilation mode.

#### Description of DIP Switch:

	ON	OFF
1	For new PTAC unit	For old PTAC unit
2	Beeper silent	Beeper tweet
3	Reserved	Reserved
4	Memory enable	Memory disable

1) The first DIP switch will select the paired PTAC unit. For new units produced after September of 2018, this switch should be put to ON position. If you are not sure the date of manufacture, just try both On and OFF setting to see which is correct. For the fault setting, the controller will fail communicating with PTAC unit.

2) The second DIP switch to set the beeper sound. Putting to ON will disable the beeper, for any button pressing, the beeper will keep silent. The OFF position, any button pressing will cause the beeper to tweet.

3) The fourth DIP switch is for memory. Putting to ON will enable the controller to remember all operations. After power cut restart, it will run the same settings as before. Putting to OFF will disable memory. The next start will come back to initial status.

NOTE: Any reprogramming the DIP switches should be under power cut. It is recommended that the communication harness at the back to be pull out. After finishing reprogramming, put the harness on.

## II. Installation of Wire Controller

### Safety Precautions

- ! Read the safety precautions carefully before installation.
- ! The following is the important content to be paid for the safety, be sure to follow it.
- ! The meaning of each part:

**Warning:** Indicate it may cause the death or serious injury for the improper operation.

**Note:** Indicate it may cause the death or serious injury for the improper operation.

#### Notes:

- Please do not install the wire controller in damp or direct sunlight places.
- Please do not hit, throw and frequent disassembling the wire controller.
- Please do not operate the wire controller with wet hand; Don't make any fluid into the wire controller.
- Please do not do dismantling the wire controller without authorization. Please consult after-sales maintenance personnel if you have a problem.
- To prevent water and dust from entering the wire controller, affect the normal use. Please dismantle the wire controller when the indoor decoration and maintenance is completed.

### Installation and disassembly of the wire controller

#### 1. The installation position and requirements of the wire controller

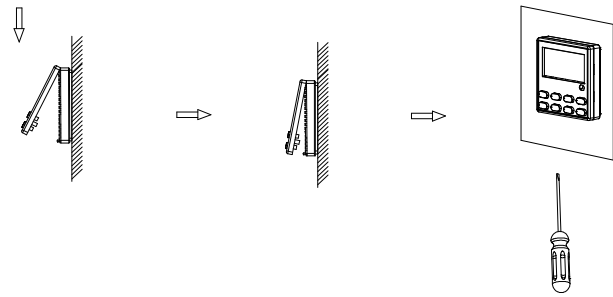
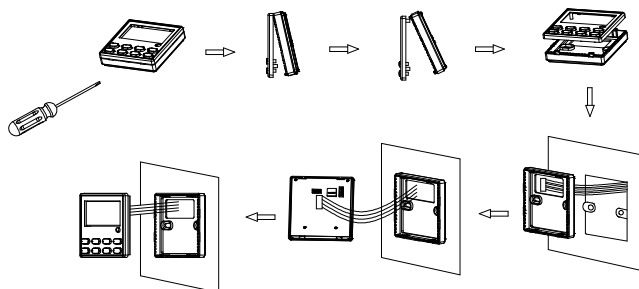
- 1) Please do not install the wire controller in damp or direct sunlight places.
- 2) Please do not install the wire controller in places where is near the high temperature or easy to splash water.
- 3) To avoid the interference of the neighbors' remote controller which has the same model, then cause abnormal work. Please do not install the wire controller where the face up to the window.
- 4) Before installation, please cut off the power which is buried in the wall mounting holes. The whole installation process does not allow operation with power.
- 5) In order to avoid the unit by reason of electromagnetic interference caused by abnormal work. When wiring, please pay attention to the following matters.
  - A) Ensure that communication line access right, otherwise will lead to communication failures.
  - B) If the air conditioning unit is installed on the places, which is influenced by electromagnetic interference, the wire controller signal lines must use shielded twisted-pair cable.
- 6) The standard accessories which are needed for installation are: installed inside a wall socket bottom box, controller base plate, screw the M4 x 25, control panel.

#### 2. The installation of the wire controller

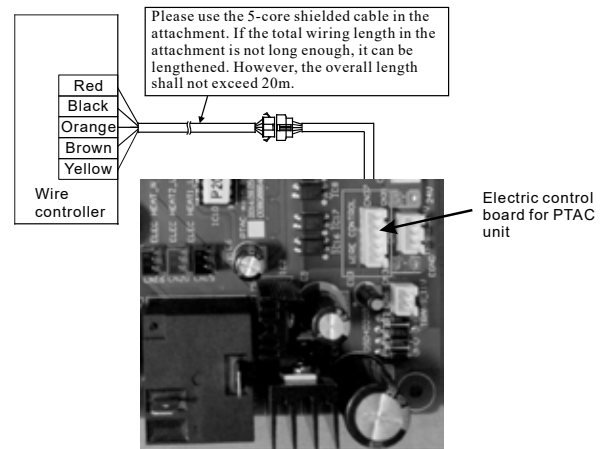
First of all, the wire controller signal line connection mode is as follows:

- 1) Open interior electrical lifted the lid, and the signal wires through the rubber ring;
- 2) Plug the wire controller signal lines within the five core needle base on the indoor machine circuit boards, and using cable tie line tied tightly fixed.

Next, the wire controller installation steps as shown in the figure below:



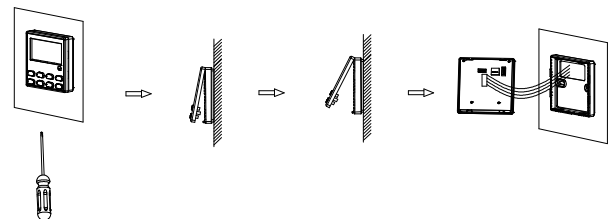
Connect the wire controller in the way as shown in the figure below



#### Brief description of the installation process is as follows

- 1) The signal lines of short through rectangle hole of the wire controller bottom plate, and then pull out five core twisted pair from the wall installation hole. Finally connect the line and the other end.
- 2) Use screws M4 x 25 to fix the controller base plate on the mounting holes of the wall.
- 3) Put the wire controller panel and floor buttons together, and this installation is complete. When installation, please reserve a certain length of the line at the bottom of box, to facilitate maintenance later removed.

#### 3. Disassembly of the wire controller



! After completion of the installation, confirm there is no abnormality for the commissioning, and deliver the instruction to customers for storage.

#### Note:

- It may cause the rear cover deformed if the screw is tightened too much.
- It is necessary to reserve a certain length for the connecting cable of the wire controller during the installation, so as to take down the wire controller for the maintenance.

Due to ongoing product improvements, specifications and dimensions are subject to change and correction without notice or incurring obligations. Determining the application and suitability for use of any product is the responsibility of the installer. Additionally, the installer is responsible for verifying dimensional data on the actual product prior to beginning any installation preparations.

Incentive and rebate programs have precise requirements as to product performance and certification. All products meet applicable regulations in effect on date of manufacture; however, certifications are not necessarily granted for the life of a product. Therefore, it is the responsibility of the applicant to determine whether a specific model qualifies for these incentive/rebate programs.

*Comfort-Aire*® **Century**®

1900 Wellworth Ave., Jackson, MI 49203 • Ph. 517-787-2100 • [www.marsdelivers.com](http://www.marsdelivers.com)

